



K-STATE
Research and Extension

APRIL, 2025
www.maraisdescygnets.ksu.edu

INSIDE THIS ISSUE

News & Notes - Pg 2-5
Seeds for Kids flyer - Pg 6
Calendar - Pg 7
Adv. Training - Pg 8-9
Article of Interest - Pg 10
Plant sale update - Pg 11
Plant Sale Hotties - Pg 12
Plant Sale (Table layout) - Pg 13
Plant Sale Flyer - Pg 14

ADVISORY BOARD

Chairman-Janette Everhart
Vice Chair - Carol Vandenberg
Secretary - Helen Kloepper
Treasurer - Lynn Campbell
Members at Large:
Stephanie Myers
Susan Rodgers
Rena Tedrow

MdC Vision Statement

We are recognized as a welcoming, knowledgeable, focused gardening volunteer team. We grow, communicate with, and educate our community and ourselves. We build lasting connections and friendships.

WORK DAYS

MiCo Courthouse Garden
Wednesday's, 8a - 10a

Trial Garden/Cut flower Garden
Tuesday's, 8a

LaCygne Community Garden
Wed and/or Fri 9a - noon

Linn Co. Courthouse Garden
Tuesday's 8a

DAYS AND TIMES ARE SUBJECT TO CHANGE

What's Growing On.....

in the world of the Marais des Cygne Extension Master Gardeners

Paola Office: 913 N Pearl (Old KC Road), Paola, KS 66071 ~ 913-294-4306

Mound City Office: 115 S 6th St., Mound City, KS 66056 ~ 913-795-2829

And we continue to be busy, busy, busy...

It's April and things are ramping up... Clean-up has already taken place at the MiCo Courthouse Garden... A couple of short-term projects have been completed.... In a couple of weeks, it's the annual plant sale... The work at the LinCo Courthouse Garden has already started... The Trial Garden and Cutting Garden will start clean-up (and hopefully planting) in May.



The 'circle' garden at the LinCo. Courthouse Garden

Whew! That...is a lot!

Meanwhile in the background, the committees that are planning the Fall Garden Tour and the 2026 Garden Symposium are quietly at work.

Yes indeedy...we are busy little bees.



Committees**Courthouse Garden**

Phyllis Benedict

Trial GardenDennise Fink-Morse,
Chet McLaughlin, Shirley New,**KSU Extension Office Garden**

Deb Kitchell

Linn County Courthouse GardenTheresa Barr,
Monica Chapman-Pickett**Advanced Training**Stacey Campbell &
Stephanie Myers**Awards Banquet**Donna Cook, Betsy Hasselquist,
Susan Thompson**Symposium - 2024**

Janette Everhart

Plant SaleSue Burns, Lynn Campbell,
Lenora Larson**Garden Tour (2025)**

Susan Rodgers, Audrey Gabel

Seeds for KidsBetsy Hasselquist &
Helen Kloepper**Miami County Fair**Dennise Fink-Morse, Hort. Supt.
Betsy Hasselquist, Seeds4Kids
Supt.
Bill Vandeberg, Flori. Supt.**New Recruits/Mentors**

Rena Tedrow

Other**Publicity**Lenora Larson
Scott Schappell**Newspaper Articles**

Katelyn Barthol, Extension Agt.

Social Media/newsletters

Rena Tedrow, Editor

Articles, photos, etc. to be included in the monthly EMG Newsletter should be sent to Rena at mire1108@yahoo.com by the second Thurs. of each month.

General Meeting - April 8th ...

Dinner was a delicious baked potato bar with many yummy toppings along with wonderful salads and desserts. The meeting that followed was informative and fun. Please plan to join us for the next meeting (in July).

Plant sale Volunteer sign-up...

Your help is needed ASAP! The time is now! Please sign up for volunteer time for the plant sale. There are still several time slots open that need to be filled. This is such a fun time to help fellow gardeners in our extended community! Here is the link to sign up sale. <https://www.signupgenius.com/go/4090D49ABAC22A6F58-55094196-2025>

Choose one open time slot for morning and/or afternoon on any (or all) of the three days. Your help will also be invaluable if you are able to help 'take down/clean up' on Saturday.

A meeting is scheduled for Thurs., April 17th, 6:30p at the extension office for plant sale volunteers. See pages 7-10 for additional information related to the plant sale.

Trial Garden...

The Trial Garden temporarily will be called the "Kitchen Garden" this year. Additional produce will be added [this year] to include plants such as cucumbers, beans, watermelon, just to name a few. This will mean it will need a little more attention to watering.

It was announced at the General Meeting that the Rookie group's project for this year will be to assist Chet M. and Dennise F-M with the garden. A few of the Rookies have volunteered to start seeds for some of the plants. The first workday will be Tuesday, May 6th to clean up the garden as well as the Cutting Garden.

The workday has been changed from Wednesdays to Tuesdays to accommodate a pantry in their distribution to their patrons.

Hotline is underway, sign-up now...

Katelyn previously sent an email with the link to schedule your time! Invite a friend, or someone you want to know better! Here is the link as well: <https://www.signupgenius.com/go/4090D49ABAC22A6F58-55094188-2025>

New Computer/Printer and Digitizing software Training...

Natalie Hartig will be offering some training near the end of May on the new computer and printer as well as the new procedure to capture our old documents in our new digital repository.

By-laws change proposal

The board had been working on a couple of small changes to clarify the meaning in two sections of the by-laws. We were unable to take a general membership vote at our General Meeting because we did not have enough voting members to make a quorum. If you would like to review the proposed changes, contact Janette to get a copy. We will schedule a vote for our next general meeting.

New Marketing Chair...

Scott Shappell has agreed to work with Lenora Larson to take over marketing responsibilities. Transition will begin soon. A HUGE thank you to Lenora for her YEARS of leadership in this role. And many thanks to Scott for his willingness to take it over.

New Garden Tour Co-Chair...

Audrey Gabel has agreed to co-chair the 2025 Fall Garden Tour with Susan Rogers. Thank Audrey, for your commitment!

Last minute note - Iris Garden tour...

Once again, Deb Wilson is inviting our group to tour her Iris Garden in La Cygne on April 29th. The time is yet TBD but will ask Katelyn to send a message toward the end of next week with the information. Didn't want information to get lost in the plant sale information distribution in the meantime.

Deb and I (Rena) attended a 'Flower, Home & Garden Show' in Leavenworth about a month ago. It was small, but my first booth of interest was for the Leavenworth EMGs. I tried to get a photo of their booth--because it was quite nice, showcasing their projects--but could never get a clear shot. They were swamped the 3 times I tried. We did sit through a couple of classes presented by the Leavenworth EMGs - 'Vermicomposting' and an 'Iris 101' class.

Deb and I chatted with the women who presented the Iris class afterwards (both Rookies), and as a result we may or may not invite some Leavenworth EMGs. Will be talking with Deb about it later this week.

For those of you who have not been to Deb's, one of the beds is dedicated to 'Historical Iris.' She now has over 600 varieties of Iris throughout her yard.

This is a social activity, so no AT hours are credited. Please contact Rena T. if interested in attending at mire1108@yahoo.com.



Janette Bennet helping with the La Cygne Community Garden prep work. Doris McElreath, behind Janette.

► **Annual Plant Sale...**

Plans continue for this year's plant sale. Mark your calendar - set-up is April 23rd from 9a-3:00p. The sale takes place on Thurs, April 24th (9a-5p), Fri, April 25th (9a-6p) and Sat April 26th from 9a-3p at the MiCo Fairgrounds, Bldg 2. Training is planned for April 17th at 6:30p. See page 7-8 for updates.

► **Short-term project...**

Tri-Ko in Osawatomie. 9:30a April 29th. The group will be helping 55 residents pot flowers to enjoy. Location of site will be distributed soon.

► **Iris Garden tour at Deb Wilson's...**

April 29th, in the afternoon. Time TBD and will be distributed next week.

► **Next Board meeting...**

May 13th at 9:30a at the Paola Extension office. **All** members are welcome to attend! If you plan to attend, please let one of the board members know. There are occasions when the meetings are conducted via Zoom due to inclement weather. We want to make sure those interested in attending are added to the distribution list.

► **Garden Tour Meeting**

May 1st at 10:00a at the Extension office.

This month's garden word search....



B	R	W	E	R	D	U	G	A	R	D	E	N	A	Y	D	J
E	O	K	P	O	T	H	I	P	G	F	X	L	S	H	A	V
R	S	P	R	O	U	T	Z	O	U	R	E	W	O	L	F	P
R	T	S	C	T	Q	L	N	M	Y	G	O	C	K	I	F	L
Y	E	Z	G	S	F	A	K	U	I	E	E	W	A	S	O	V
U	M	U	R	O	R	C	H	A	R	D	L	O	U	J	D	E
I	D	X	E	Q	U	O	P	L	A	N	T	S	R	V	I	G
A	W	R	E	B	I	G	E	H	A	F	L	S	O	I	L	E
P	A	M	N	K	T	P	R	S	H	D	M	N	G	C	E	T
I	T	C	H	O	N	E	Y	B	E	E	Y	E	O	T	B	A
L	E	J	O	W	T	T	Q	L	W	D	K	B	A	U	Y	B
U	R	L	U	H	Z	A	M	C	T	A	Z	I	U	D	R	L
T	V	Y	S	E	G	L	E	A	F	P	U	J	S	G	O	E
H	S	E	E	D	I	F	S	R	Z	C	L	O	V	E	R	W



1. GARDEN
2. PLANTS
3. FLOWER
4. GROW
5. SEED
6. SPROUT

7. LEAF
8. STEM
9. PETAL
10. ROOTS
11. SOIL
12. WATER

13. POT
14. ORCHARD
15. MEADOW
16. GREENHOUSE
17. CLOVER
18. TULIP

19. DAFFODIL
20. FRUIT
21. VEGETABLE
22. BERRY
23. LADYBUG
24. HONEY BEE

ADVANCED TRAINING SCHEDULE

2025 Marais des Cygnes Extension Master Gardener Advanced Training Calendar

Note: Additional trainings will be added throughout the year as they are scheduled

MO	DAY	TIME	# HOURS	TOPIC	SPEAKER	LOCATION
Apr	24	7p - 8p	1	Tales from the Plant Explorer: Collecting Plants for Conservation & the Pursuit of Knowledge	Michael Dosmann, PhD	Linda hall Library (or virtual). Register: https://events.lindahall.org/talesfromtheplantexplorer
Jun	3rd	Late afternoon	0	Spring Butterfly Garden visit	Lynn Fogle former JoCo EMG	Lynn Fogle's garden 15192 W. 335th St., Paola (Note: this may be a social event depending on educational content)
Jun	6/7	9a - 4p	5	MU Extension Garden Tour	Varied	Lee's Summit area. Tickets go on sale April 1 - \$20. https://mggkc.org/our-projects/garden-tour/
Jun	21	10a	0	High Tunnel Gardening Essentials: Water, soil, and beds	Audrey Morris, MdC EMG	Three Meadows Farm 34480 Cold Water Rd. (aka Cold Water Springs Rd.), Louisburg KS
Jun	24	6-7p	1	Solitary Bees	Nancy Kalman	Paola Extension office. 913 N. Pearl
Aug	25-28	See website for schedule	1 hr. per speaker attended	International Master Gardener Conference	https://www.img2025.com	Virtual only - see website for details. Online classes - must be registered for full event, not by class Early bird registration - \$185 After June 21 st - \$210
MdC Training Hours			Other training hours		Red text denotes new training added or updated info.	

Ideas for AT for 2025?

Do you have ideas for Advanced Training (AT) classes for this year? Call or drop Stacie Campbell and Stephanie Myers an email with your suggestion(s).



The **K-State Garden Hour**, is at 12:00 PM on the 1st Wed. of each month. **You must register if this will be your first time joining the webinar.** <https://hnr.k-state.edu/extension/consumer-horticulture/garden-hour/>.

May 7 - Heat Loving Perennials for Kansas ~ June 4 - Native & Ornamental Grasses of Kansas

Past recordings are available on the website.

Deep Roots Native Plant Webinars - Lunch and Learn, 12p - every 1st Thursday of the month.

Native Plants at Noon, 12:00p - every 3rd Thursday.

Apr 17 - Spring Ephemerals w/JoCo Parks & Rec. ~ May 1- Big Bull Crk w/JoCo Parks & Rec

Register for both webinars at **deeproots.org** (past recordings available on website)



2025 Plant Sale Update - Lenor Larson, Co-chair**Set-up: April 23rd. Sale 24th - 26th, MiCo Fairgrounds, 401 Wallace Park Dr., Paola, Bldg #2****Progress Report...**

After months of planning, the Plant Sale's logistics are now in place. This includes designing the table set-up and verifying pricing and developing a new half-page tally sheet, which has the Group #s on the back for plant finding. Sign-up Genius is filling but there are still some critical openings for staffing the tally tables and cashiers. Please sign-up, even if you won't be able to attend the April 17th Training. Lynn and Sue can do quick on the job training during the sale. Here is the link: <https://www.signupgenius.com/go/4090D49ABAC22A6F58-55094196-2025>

Sue has posted the new "we've moved" banners at the Extension Office and Fairgrounds. The Wednesday set-up schedule has been established with 10 am and 2 pm deliveries from VVN. Lynn has arranged for pickup of our tables (which are being stored at Billie's and Chet's and Shirley's) and transportation of our supplies, which are stored at the Extension office. This includes "the Lucy Booth", signs, Pot/Pricing Displays and items like carts and shelves. All necessary signage for inside Building #2 set-up has been checked by Sue and is in the storage room.

For the first time in many years, we are performing a pre- and post-sale inventory as part of our profit analysis. The Plant Ambassadors will each do the inventory on their Group during the Wednesday set-up. Final post-sale inventory will be conducted at VVN in conjunction with their staff on Sunday. Unless all plants are sold, LOL! It could happen!!!

Lenora met with VVN on April 4th to verify that we are in operational and pricing agreement. The plant lists and inventory sheets will be provided by VVN by April 16. Our plants are happily growing in the VVN greenhouse, organized by group, and already are large and robust despite the recent colder weather. Amy released Lady Bugs two weeks ago so there are no aphids, or mealy bugs or spider mites in sight! Amy expects to have all the plants on the 2024 list plus our 2025 requests.

We will again provide lunch for all EMG workers and you will enjoy a 10% discount on your purchases after 10 am on Saturday. (And that's if you dare wait that long!) You may not pre-purchase or set back plants on Wednesday. Track your hours, which will count towards your 40 Volunteer hours. One small glitch this year, Cowboy Coffee will not be able to join us.

Marketing...

My focus has switched from operations to promoting the Plant Sale.

We are planning a grand party. What if nobody comes? YIKES! So, we need help from EVERYBODY in spreading the word. *Kansas City Gardener* has published our March and April Ads and articles. I've reached out to other media and civic groups, including *Miami County Republican* columnist Beth Connor, who will feature our sale in her April column. I've also compiled a marketing contact list and emailed the flier to 48 area gardening and native plant organizations. Response has been outstanding and many garden clubs are emailing our flier to their members and/or including it in their newsletters. It has also been posted on the Idalia Butterfly Society and Kansas Native Plant Society sites as an event. Katelyn emailed the flier to other neighboring Kansas EMG Programs, and I've emailed it to nearby Missouri Master Gardener Programs. It was also published in the *Linn County Journal*, an online newspaper in Linn County. Rena continues to post updates along with our flier on our Facebook page. If you haven't already, please follow the page and PLEASE SHARE WITH YOUR FB FRIENDS! <https://www.facebook.com/mdcemg> Katelyn also sent the flier PDF and JPEG to our EMGs so you can send by text or email to your friends and families. We've organized volunteers to drop off fliers to MiCo and LinCo businesses.

Do you have ideas for other Outreach sources for marketing? We'd love to hear from you!

Training...

The other key activity is training. For the Plant Ambassadors, I've sent frequent updates, and we had a short meeting after the 2Q meeting. Lynn has scheduled the general Plant Sale Training, which will include the flow of the sale from set-up on Wednesday to final clean-up on Saturday and final post-sale inventory on Sunday at VVN. Since all EMGs will have the final Plant List by that date, Natalie will demonstrate how to use it as a downloaded plant search document on our smart phones. Lynn will address cashier issues, and we'll allow time for any questions. Fortunately, we have many seasoned sale workers and we're really good at supporting each other.

Special Plant Sale Features...

Free Books: Please bring gardening books in reasonable repair on Wednesday 4/23 and Thursday 4/24 to donate to our free book table. You may also find some gently used books to take home to your own library! Michael Poss will act as our head librarian!

Plant Ambassadors: Our plant specialists have been studying their plant lists and are ready to help shoppers select the very best options for their gardens. They will also assist with Wednesday set-up and inventory. Depending on how many plants remain at the close of sale, we'll determine how many EMGs will be needed at VVN on Sunday for the post-sale inventory. We share a fantasy: maybe there will be nothing left to count!

Seeds for Kids: Forms and seeds will be available for people to enroll their children/grandchildren and take a kit home. Marigold, Sunflower, Zinnia, Cucumber and Zucchini seeds are in each packet.

Lucy Booth (for Q&A): Nancy Kalman and Connie Murphy will again staff the booth and offer many resources to assist both new and experienced gardeners.

Next Steps: WHAT CAN YOU DO TO HELP?

- Attend the training on Thursday, April 17th at 6:30p. Let Lenora, Lynn or Sue know if you have training subject requests.
- Set up the road signs on Wednesday, April 23rd
- Bring gardening books
- Remember to wear you EMG clothing and nametag
- Prepare to talk about plants!



VN's Amy and Celie posing in front of the baby Popcorn Sennas, already 10" tall on 4/4. This is a MUST-HAVE feature plant for your sunny garden. You saw Scott & Matt's Popcorn Senna in the November Newsletter. And yes, it really does smell like popcorn!



Here's my Popcorn Senna, 6' tall by August. They are in Group 6, the butterfly hosts, because Sulphur Butterflies caterpillars eat the leaves. We butterfly gardeners want to see nibbled holes on our plants!

PLANT SALE TRAINING

Lenora Larson

WHO, WHAT, WHERE, WHEN...?

All volunteers for the plant sale - be at the Extension office on April 17th at 6:30p.

BUT FIRST, A LITTLE HISTORY...

Our annual plant sale started as a 'New Class Project, almost 20 years ago. Members dug up plants from their own gardens and grew seedlings to sell at the Louisburg Cider Mill. However, this proved far too inconsistent and laborious to continue. In 2006 we contracted with Ken O'Dell, owner of Spring Valley Nursery, to grow our plants on consignment and moved the sale to the Ursaline campus where we officed and maintained ornamental and trial gardens.

Ken was the Eastern Kansas Director of the Kansas Native Plant Society and recognized as the area's foremost native plant guru. He did many Advanced Trainings for us and became an Honorary EMG. He established both a spring and a fall sale and allowed only native plants and herbs plus Hostas from Rob Mortko. Plants were grown at Spring Valley Nursery and Vinland Valley Nursery, which Ken had helped establish with his daughter-in-law, Amy Albright (EMG Judy Moser's daughter.) He also did all the marketing and managed the revenues, so we just received a check from Ken and never saw the financial reports.

The sale had also been a tax-exempt fund-raiser for the Ursaline Nuns. Was it a successful business? We didn't know, but it was so much fun! And the plant sale became our best opportunity to promote our EMG mission, which is to provide science-based horticultural information to the citizens of Kansas. Gardeners rarely call the hotline, but plant shoppers really want our advice!

When Ken retired in 2015, we thought our plant sale days were over. EMG Mary Miller heroically took over and contracted with three vendors: Vinland Valley Nursery for natives and herbs, Louisburg Nursery for bedding plants and vegetable transplants, and Boston Berry Farms for tropical plants and fruits. These relationships allowed us to expand our offerings beyond natives to include ornamentals, vegetables and houseplants. We even had garden art vendors! We moved the sale to various parking lots along Baptiste for higher visibility until the Extension Office moved to Pearl Street in 2021. Our gross revenue started at \$14K in 2015 when we assumed control and has grown annually to almost \$50K. (Except in 2020 when COVID forced cancellation.) We expect 2025 to be the best year ever!



2012. Ken O'Dell selling plants at our sale in the Ursaline parking lot



In 2022 the wind threw one tent across Pearl Street and the other was found at the Paola Country Club!

We have a wonderful space at the Pearl Street Extension Office, but Mother Nature continues to be cruel. Every year since the beginning, at least part of the sale has had to be canceled due to weather. For several years, Katelyn has endeavored to arrange for us to move indoors to Ag Building #2 at the Miami County Fairgrounds. This move became feasible when the Fairgrounds upgraded their internet access, which is needed to run the credit cards that account for about 70% of our revenue. 2025...we will celebrate INDOOR PLANT SHOPPING! This is our sixth move since 2007, but our loyal shoppers always find us, thanks to extensive promotion.

AND BACK TO THE 'TRAINING'...

Training Topics

The current Plant Sale Committee consists of Sue Burns, Lynn Campbell and Lenora Larson. Each of us has our area of expertise to share with the participants. Sue manages logistics and administrative details. Lynn heads up the financial responsibilities, including cashiers, checkout and reporting. Lenora is the ultimate plant nerd and the liaison with our vendor, Vinland Valley Nursery.

We will have brief presentations, handouts and, most importantly, answer questions. We will be joined by Natalie Hartig, our techie expert who triumphed last year with the downloaded PDF plant list on her smart phone. The final VVN plant list will be emailed to our EMGs before the training. Many of you already know how to download and search on your smart phone, so go ahead when you receive the email. Natalie will have instructions and assist new users—and those of us who need a refresher!



Plant Sale Hotties.....

Lenora Larson

Members of the Plant Sale Committee and staff from Vinland Valley Nursery have been introducing you to some of our favorites that will be available at the Plant Sale. For more information and additional photographs, Google the plant or click on the Plants Section in the Vinland Valley Nursery website - <https://vinlandvalleynursery.com/>.

Group 7 - The Woodyies: Trees and Shrubs

"Woodyies" describes perennial plants that produce structural woody growth to increase stem girth and height each growing season. Unlike herbaceous perennials they do not die back to the ground in winter. The main stems, branches and roots often have a covering of bark and in our temperate zone, the cross-section shows growth rings caused by weather-induced alternating growing and dormant periods. Depending on the plant's size, they may be referred to as a tree, shrub or liana. Woody plants are typically long-lived and often referred to as "the living bones of the garden." Garden designers recommend that you select and plant your woodyies first when creating a garden because they are usually the most impactful and most expensive garden elements. Plant Ambassador Betsy Hasselquist has always appreciated trees and shrubs for their year-round beauty and their role in supporting wildlife.

Hydrangea are among Betsy's favorite shrubs, especially the two native species (*H. arborescens* and *H. quercifolia*) with their giant flowers and hardiness. Haas Halo has been ranked as the best for humans and pollinators by the Mount Cuba Center (Douglas Tallamy's research nursery). They prefer partial sun and are drought tolerant once established. The dried flowers are favorites for arrangements and the spent flowers persist through the fall for continued beauty. Bumble bees flock to the 12" white lacecap flowers when they bloom.

Redbud Trees, *Cercis canadensis* are also Kansas natives. With their brilliant pink flowers in early spring, they are easily spotted in woodlots and landscapes. Since they are a small tree of the understory, Redbuds prefer moist soil and partial shade. But they are hardy and easy to care for since they'll tolerate drought and full sun once established. They do have one vice: copious self-seeding. You'll know that they are in the pea family when you see the fruit, which looks like a brown peapod. Be prepared for weeding, although Betsy transplants the volunteers. She says you can never have too many Redbuds!

Indian current *Symphocarpus orbitulatus*, also known as Buckbrush or Coralberry, is a native shrub in the honeysuckle family with brilliant deep pink berries. It grows in partial shade in bottom woodlands and often forms dense thickets because it spreads by long surface roots that the Indians used for weaving baskets. It grows naturally on Betsy's wooded, creek property and assists with erosion control on creek banks and slopes. Tiny white flowers attract bees, and reddish-purple berries provide winter interest. Unfortunately, it is an aggressive spreader so choose its site carefully. A redeeming virtue, it is a host plant for one of the world's cutest moths, the Clear-wing Bumble Bee Moth. (See photo, right bottom.)



A Weeping Willow makes an elegant if messy statement in your landscape!

AMY'S CHOICE...

Weeping Willow, *Salix babylonica*. Amy celebrates that spring has finally arrived when she sees the bright chartreuse leaves on her Weeping Willow. This popular ornamental tree has pendulous branches and flourishes in moist sunny sites. It grows rapidly to an impressive specimen up to 80 feet tall, but even its fans admit that it is messy and short-lived. These are minor flaws for such beauty. And it is a host for Viceroy and Red-spotted Purple butterfly caterpillars.



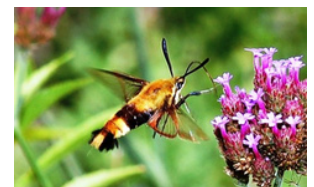
Hydrangea 'Haas Halo' was a naturally occurring variety of our native *Hydrangea arborescens* that has now become a best seller at nurseries.



Redbuds are an outstanding landscape tree with few pests or problems.



Indian Current berries are brilliant until February when they turn brown. They are not edible, even by birds.



Clearwing Bumblebee Moth nectaring on Tall Verbena. They are superior daytime pollinators and mimic bumblebees to avoid predators. Their caterpillars can't eat any plant except members of the honeysuckle family.

Seeds for Kids



and watching your plants grow!

Get FREE seed packets

at the following locations:

Paola Extension Office, 913 N. Pearl (Old KC Rd.) • 913-294-4306

Mound City Extension Office, 115 S. 6th St. • 913-795-2829

Master Gardeners Plant Sale, April 24-26, MiCo Fairgrounds (Paola)

Local city libraries

Events, planting demonstrations and community plots are planned!

Let's partner together to make our world a more beautiful and healthy place.

Enter your flowers and produce
at the Miami County Fair in July!



NEW
LOCATION!!

**Miami County Fairgrounds
Building #2**

401 Wallace Park Dr. 🌸 Paola, KS 66071

INDOOR
SHOPPING!!

Pesticide-free and Locally Grown

🦋 Butterfly host plants 🌸 Native plants 🌸 Annuals
🐝 Pollinator flowers 🌿 Herbs 🌻 Perennials 🌳 Trees
🧺 Hanging baskets 🍇 Veggies & berries
🌵 Succulents

Cash, Credit Cards and Checks accepted

Scan here



for driving directions

For additional information call 913-294-4306

visit www.maraisdescyignes.ksu.edu

or follow us on www.facebook.com/mdcemg

Sponsored by:

K-STATE
Research and Extension

Master Gardeners
Marais des Cygnes District